

## Appendix

Intraspecific variations of the astragalar and calcaneal sizes in living Japanese monkey (*Macaca fuscata*)

by Takehisa Tsubamoto

in Memoirs of the Faculty of Science, Ehime University, vol. 22, p. 1–17, 2019

**Table A1.** Original data of the specimens of living Japanese monkey (subspecies *Macaca fuscata fuscata*) used in this paper.

**Figure A1.** Comparison of the distributions of the astragalar and calcaneal measurements between the male and female adult specimens.

**Figure A2.** Comparison of the distributions of the body mass and molar measurements between the male and female adult specimens.

**Figure A3.** Scatter plot matrix of correlation for the all adult measurements.











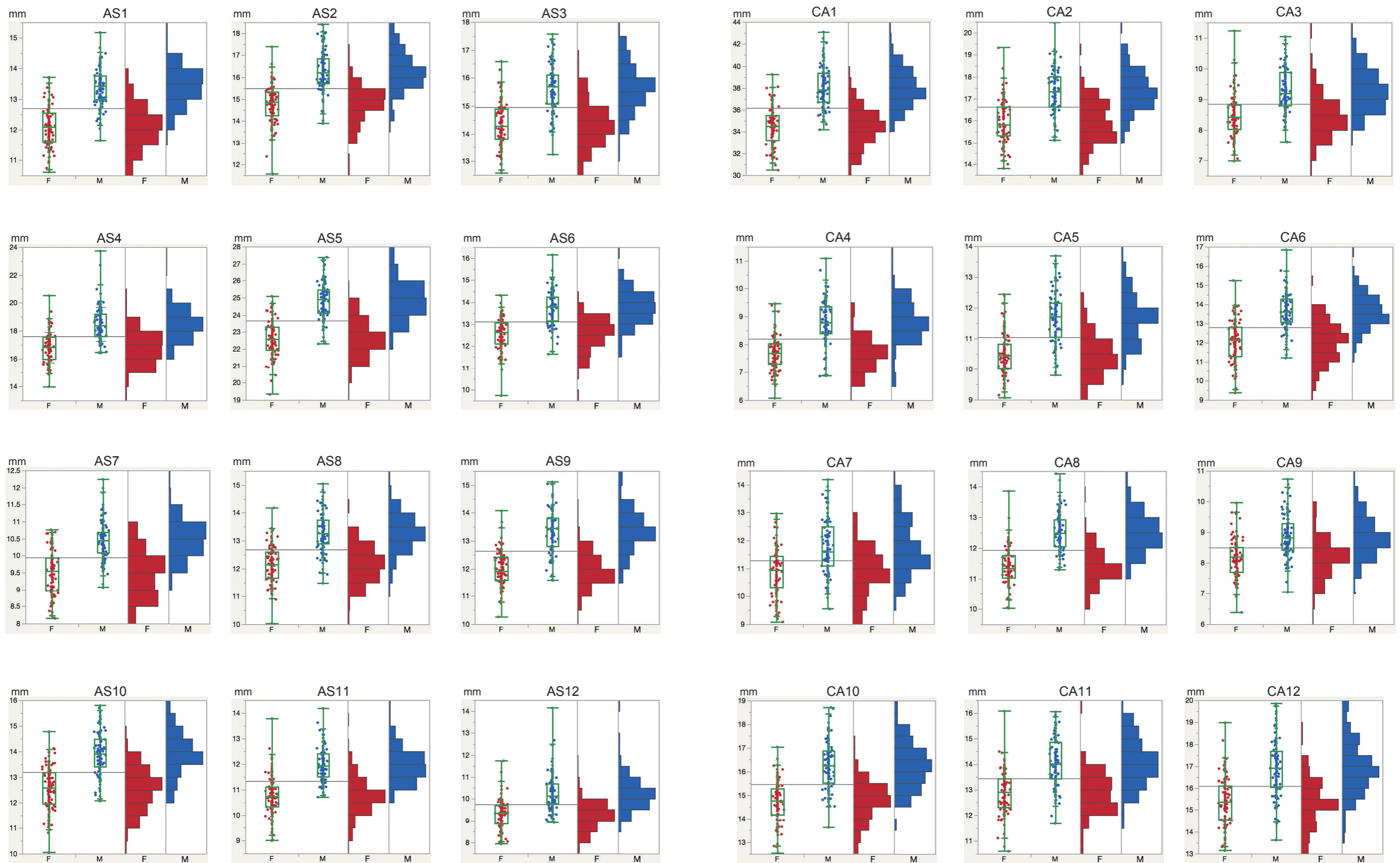




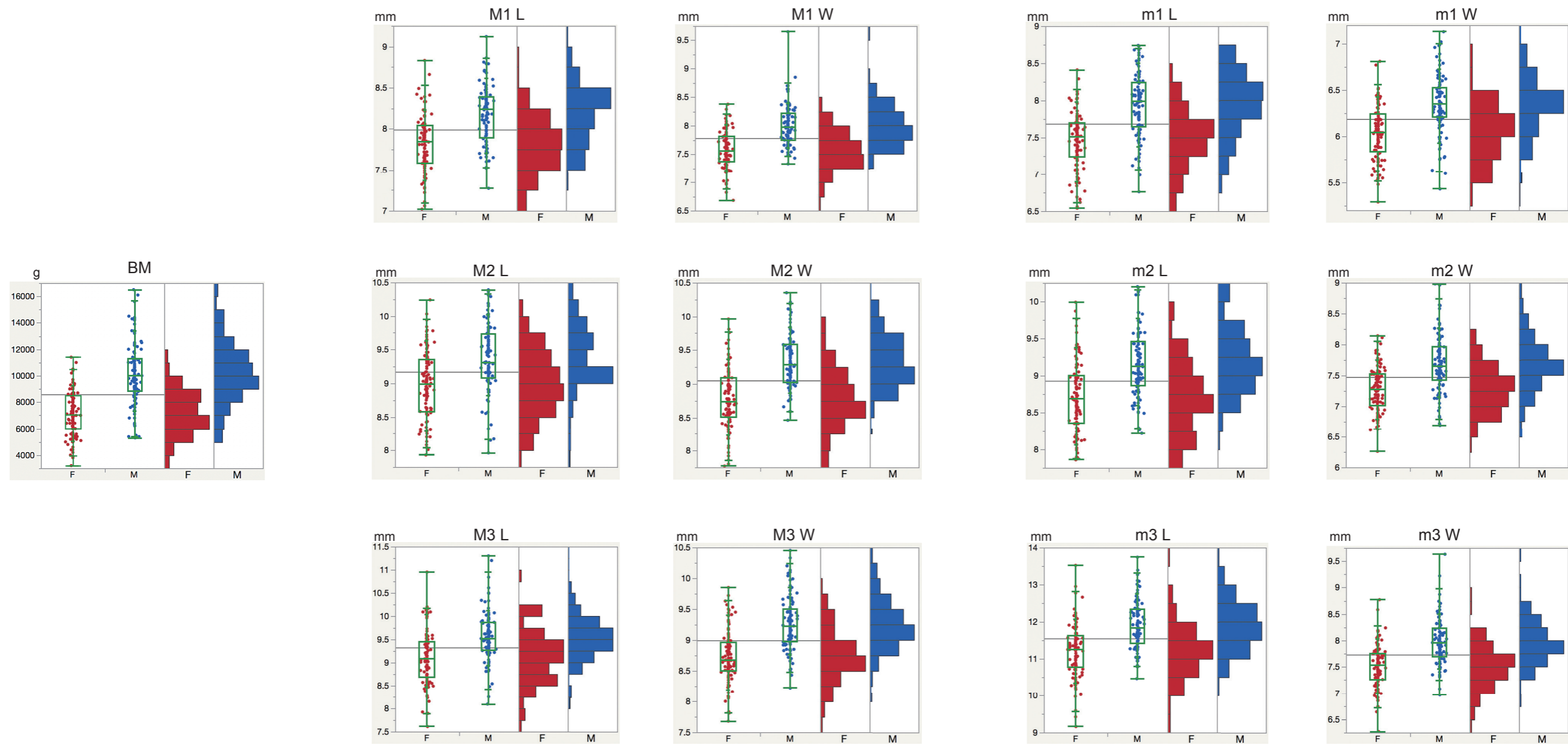


Tsubamoto—Appendix: Table A1

Sex	Adult/ Juvenile	KUPRI No.	BM	AS1	AS2	AS3	AS4	AS5	AS6	AS7	AS8	AS9	AS10	AS11	AS12	CA1	CA2	CA3	CA4	CA5	CA6	CA7	CA8	CA9	CA10	CA11	CA12	M1 L	M1 W	M2 L	M2 W	M3 L	M3 W	m1 L	m1 W	m2 L	m2 W	m3 L	m3 W					
M	Juvenile	6961	500	5.37	4.14	3.98	6.08	9.52	3.26	3.77	3.68	4.22	6.91	4.56	3.39	—	4.84	3.17	3.71	3.72	—	4.55	4.36	3.38	5.92	5.21	5.21	—	—	—	—	—	—	—	—	—	—	—	—	—				
M	Juvenile	6958	600	5.50	4.57	4.57	5.97	9.73	3.74	4.14	4.01	4.49	6.48	4.53	3.32	—	5.50	3.92	3.43	3.69	—	4.98	4.67	3.29	6.30	5.73	5.75	—	—	—	—	—	—	—	—	—	—	—	—	—	—	—		
M	Juvenile	6957	600	6.53	5.48	5.32	7.27	11.26	4.72	4.88	4.80	5.04	7.31	5.40	4.51	—	6.45	3.99	4.22	4.34	—	5.38	5.61	3.82	7.00	6.21	6.32	—	—	—	—	—	—	—	—	—	—	—	—	—	—	—	—	
M	Juvenile	6438	2,300	9.60	9.57	9.74	10.97	17.36	8.62	7.12	7.74	7.55	10.31	7.98	6.35	—	10.15	5.58	5.38	6.62	—	8.07	7.48	5.67	9.75	9.09	10.02	—	—	—	—	—	—	—	—	—	—	—	—	—	—	—	—	
M	Juvenile	6437	700	5.63	4.93	3.38	6.18	8.67	2.91	3.69	3.69	4.47	6.92	4.74	4.04	—	4.74	3.17	3.61	3.77	—	5.08	4.16	3.05	6.37	5.61	5.18	—	—	—	—	—	—	—	—	—	—	—	—	—	—	—	—	
M	Juvenile	6401	400	3.81	3.15	2.55	4.17	5.79	2.07	2.45	2.56	3.13	4.35	3.20	2.58	—	3.64	2.51	2.73	3.04	—	3.79	3.53	2.63	4.49	3.84	3.70	—	—	—	—	—	—	—	—	—	—	—	—	—	—	—	—	
M	Juvenile	6350	1,000	7.54	6.52	6.88	8.70	13.21	5.41	4.96	5.75	6.12	8.45	6.07	4.54	—	6.50	4.07	4.07	4.81	—	5.18	5.50	4.13	7.23	6.96	7.60	—	—	—	—	—	—	—	—	—	—	—	—	—	—	—	—	
M	Juvenile	6296	700	6.43	5.58	5.79	7.32	11.74	4.96	4.82	4.85	5.11	7.82	5.42	4.16	—	6.42	3.91	3.93	3.66	—	5.56	4.80	3.71	6.77	6.40	6.55	—	—	—	—	—	—	—	—	—	—	—	—	—	—	—	—	
M	Juvenile	6293	500	6.23	5.24	5.27	6.85	11.23	4.31	4.30	4.54	4.73	7.26	5.35	3.82	—	5.88	3.93	3.73	4.40	—	5.08	4.81	4.16	6.73	6.32	6.56	—	—	—	—	—	—	—	—	—	—	—	—	—	—	—	—	
M	Juvenile	6289	2,100	9.39	9.08	9.49	10.59	16.85	7.94	6.90	7.40	6.91	10.83	7.66	5.92	—	10.31	5.24	4.70	5.99	—	8.28	7.19	6.38	9.28	8.94	9.52	—	—	—	—	—	—	—	—	—	—	—	—	—	—	—	—	—
M	Juvenile	6288	2,000	9.45	8.79	8.92	10.16	15.83	7.27	6.42	6.66	6.96	9.94	7.66	5.55	—	9.39	4.92	5.14	6.06	—	8.12	6.81	5.87	8.99	8.38	8.67	—	—	—	—	—	—	—	—	—	—	—	—	—	—	—	—	—



**Figure A1.** Comparison of the distributions of the astragalar and calcaneal measurements (in mm) (AS1–AS12 and CA1–CA12; Fig. 1; Table A1) between the male and female adult specimens. F, female; M, male; red dots and histogram, female; blue dots and histogram, male; green line, box plot showing quartiles with whiskers from minimum to maximum.



**Figure A2.** Comparison of the distributions of the body mass (BM, in gram) and molar measurements (in mm) (Fig. 1; Table A1) between the male and female adult specimens. M1–M3/m1–m3, upper/lower molars; L, maximal length; W, maximal width. Other abbreviations are indicated in Figure A2.





**Figure A3.** Scatter plot matrix of correlation for the all adult measurements.  $r$ , Pearson's correlation coefficient. Other abbreviations are indicated in Figures A1 and A2.